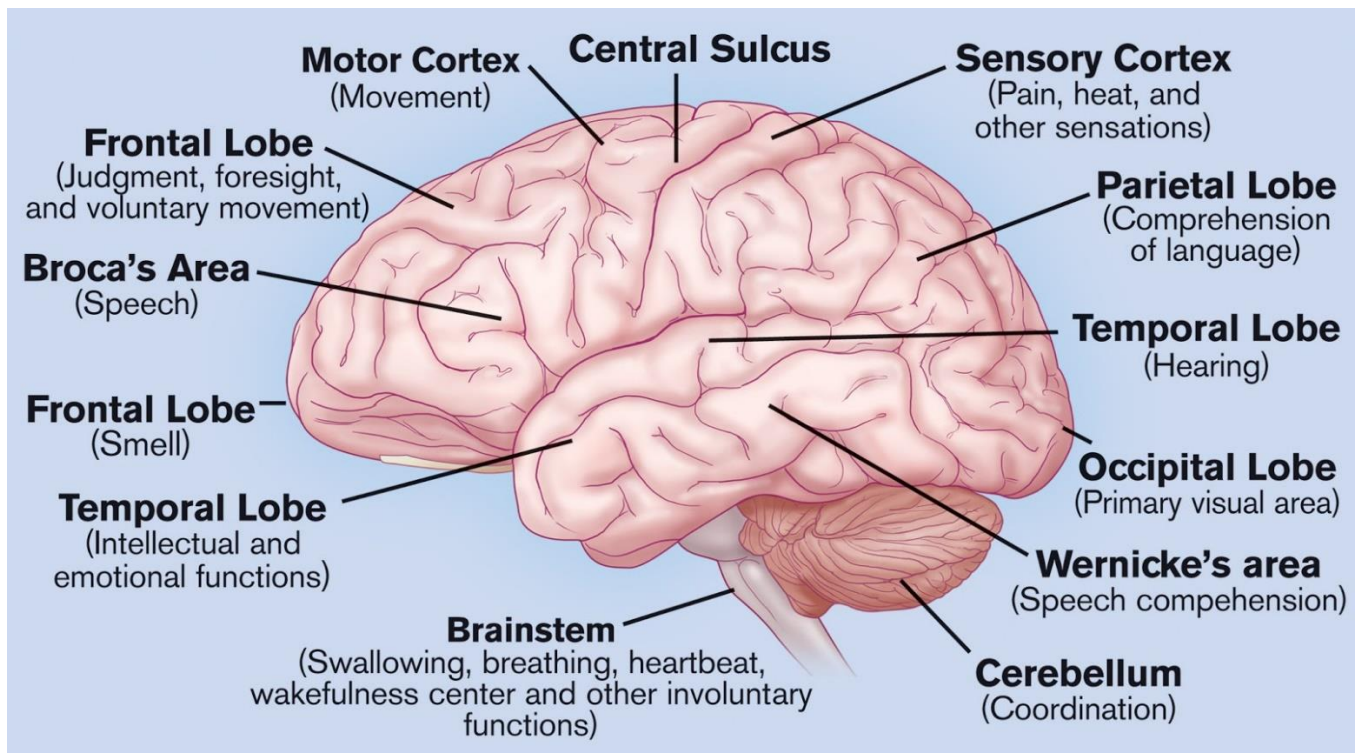


Mental Ability



Mental Ability: Understanding the Cognitive Process

1. Introduction to Mental Ability: Mental ability refers to the cognitive capacity and skills that enable individuals to process information, solve problems, make decisions, and adapt to new situations. It involves various mental processes, including memory, attention, reasoning, and problem-solving, which collectively contribute to an individual's intellectual capabilities.

2. Cognitive Pathways:

- **Perception:** The mental ability process begins with perception, where sensory information from the environment is received through the senses—sight, hearing, touch, taste, and smell.
- **Attention:** The brain then filters and focuses on relevant stimuli, allocating attention to specific aspects of the incoming information.

3. Memory:

- **Encoding:** Once attention is directed, the brain processes and encodes the information into memory. This involves transforming sensory input into a form that can be stored.
- **Storage:** The encoded information is then stored in different types of memory, including short-term and long-term memory.

4. Information Processing:

- **Reasoning:** Mental ability includes the ability to reason logically, analyze information, and draw conclusions. This cognitive process involves evaluating relationships and making connections between different pieces of information.
- **Problem-Solving:** Individuals with strong mental ability can effectively solve problems by applying logical reasoning and utilizing information stored in memory.

5. Decision-Making:

- **Evaluation:** Decision-making is a crucial aspect of mental ability, involving the evaluation of available options and the selection of the most appropriate course of action.
- **Risk Assessment:** Individuals with well-developed mental abilities can assess risks, weigh consequences, and make informed decisions.

6. Emotional Intelligence:

- **Recognition of Emotions:** Mental ability extends to recognizing and understanding emotions, both in oneself and others.
- **Emotional Regulation:** High mental ability includes the skill of regulating emotions, leading to better interpersonal relationships and effective communication.

7. Neural Pathways:

- **Brain Structures:** Various regions of the brain contribute to mental ability, including the prefrontal cortex, hippocampus, and amygdala.
- **Neurotransmitters:** Chemical messengers, such as dopamine and serotonin, play a crucial role in facilitating communication between neurons and influencing cognitive processes.

Disorders of Mental Ability: Challenges and Impacts

1. Intellectual Disabilities:

- **Definition:** Intellectual disabilities involve limitations in intellectual functioning and adaptive behaviours.
- **Impact:** Individuals with intellectual disabilities may face challenges in learning, problem-solving, and independent living.

2. Attention-Deficit/Hyperactivity Disorder (ADHD):

- **Symptoms:** Inattention, hyperactivity, and impulsivity.
- **Impact:** Difficulty in sustaining attention, organizing tasks, and following through on activities.

3. Alzheimer's Disease:

- **Progressive Cognitive Decline:** Alzheimer's disease is characterized by progressive memory loss and cognitive decline.
- **Impact:** Impaired memory, language, and executive function.

4. Anxiety Disorders:

- **Excessive Worry and Fear:** Anxiety disorders involve excessive worry and fear in various situations.

- **Impact:** Impaired concentration, restlessness, and difficulty making decisions.

5. Autism Spectrum Disorder (ASD):

- **Social and Communication Challenges:** ASD is a neurodevelopmental disorder characterized by social and communication difficulties.
- **Impact:** Challenges in understanding and responding to social cues.

6. Learning Disabilities:

- **Difficulty in Academic Skills:** Learning disabilities affect the acquisition and use of academic skills.
- **Impact:** Challenges in reading, writing, and mathematical abilities.

7. Treatment Approaches:

- **Educational Interventions:** Specialized educational strategies and interventions for learning disabilities.
- **Medication and Therapy:** Medication and behavioral therapy for conditions like ADHD and anxiety disorders.
- **Supportive Care:** Supportive care and cognitive stimulation for individuals with Alzheimer's disease.

Understanding mental ability and its disorders is essential for promoting cognitive health and facilitating appropriate interventions for individuals facing challenges in this domain.